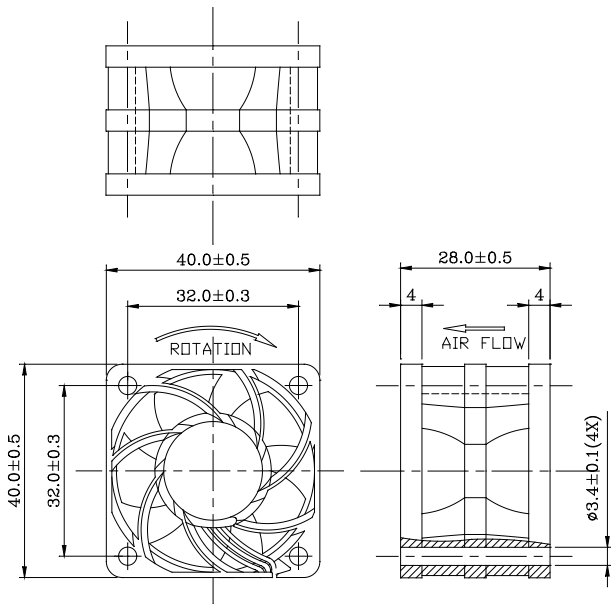
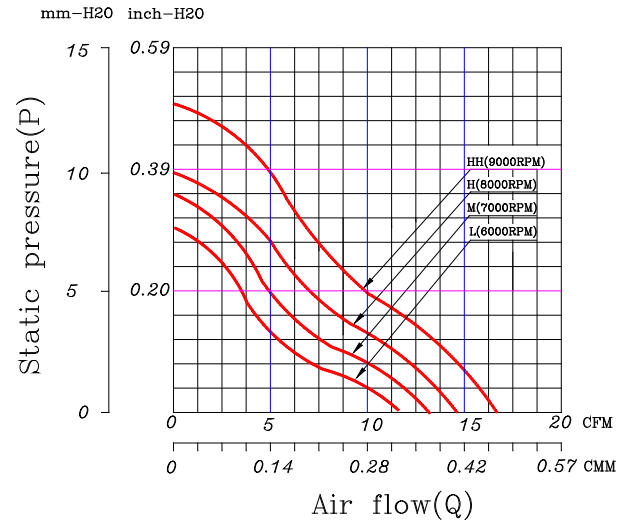


**40 x 40 x 28 mm Series**
**12/24 VDC**
**Dimensions**

**Performance Curves**


Air exhaust over struts. Rotational direction CCW looking at rotor

Brushless DC Motor	Bearing Type
Housing: PBT 94V0	● CeraDyna A
Impeller: PBT 94V0	○ 2-Ball
Weight: 30 g	○ 1-Ball-1-Sleeve
Impedance protected	● Sleeve
Lead wire UL 1095 AWG 28	* Please contact us for CeraDyna-C availability.

Function options	
● Frequency Generator	● Auto Restart
○ Temperature Control	● Rotation Detection

\* Please contact us for PWM function availability.

 \* **Safety Approval: CE, UL, TUV**

\* All fans are with electronic protection against reverse polarity. The fan only operates when the polarity is correct.

**Specifications**

Model	Rated Voltage (VDC)	Rated Current (Amp)	Input Power (Watts)	Nominal Speed (RPM)	Airflow (CFM)	Static Pressure (inch-H <sub>2</sub> O)	Noise Level (dBA)
FD1240-A00XXM	12	0.31	3.72	9000	16.65	0.50	41.00
FD1240-A10XXM	12	0.24	2.88	8000	14.80	0.39	36.00
FD1240-A20XXM	12	0.19	2.28	7000	12.95	0.35	33.00
FD1240-A30XXM	12	0.14	1.68	6000	11.10	0.30	29.00
FD2440-A00XXM	24	0.24	5.76	9000	16.65	0.50	41.00
FD2440-A10XXM	24	0.16	3.84	8000	14.80	0.39	36.00
FD2440-A20XXM	24	0.12	2.88	7000	12.95	0.35	33.00
FD2440-A30XXM	24	0.10	2.40	6000	11.10	0.30	29.00

\* All readings are typical value at rated voltage.

 \* Please refer to **PART NUMBER SYSTEM** for bearing type and part number "XX" designation.

\* Specifications are subject to change without prior notice.

\* Please specify revision number when ordering.